



# Torishima Service Solutions

**Capability Document**



# Engineered Solutions Provider.

Our main objective is to provide comprehensive solutions that benefit our customers in multiple aspects:



## Optimising Efficiency

We work to improve our customers' operational efficiency, ensuring optimal performance of our equipment.



## Reducing Energy Consumption

We develop solutions that minimise energy consumption, contributing to a more sustainable and economical operation.



## CO2 Reduction

We are committed to reducing our carbon footprint through advanced technologies and responsible practices.



## Mean Time Between Failure

We develop equipment that meets specific process requirements, improving reliability and extending system life.





## Mechanical Services

---



From our dedicated facilities in Glasgow, Torishima Service Solutions mechanical services are available to carry out any in situ repairs, as well as inspections, overhauls and installations on a host of equipment, both rotating and static, across various industries.

Our engineering staff are specially trained to handle repairs and overhauls of pumps, motors, compressors, gearboxes, steam/hydro turbines, heat exchangers, fans, mechanical seals and valves.



## Coatings

---



As a leading provider of integrated surface preparation and coating services, our experience allows us to precisely define a customised solution that best suits the customer's needs in different industries.

Based on our expertise in surface engineering and Advanced Polymer Technology, we can extend the life of equipment by effectively combating abrasion, erosion, corrosion and chemical attack.



## Pump Spares



The Torishima Spare Parts Division serves as the central hub for the supply of OEM Torishima Spare Parts, Replacement Pump Units, and all related equipment for Torishima installations throughout Europe, Africa and Latin America.

Our spare parts service is tailored to meet our customers' exacting standards of quality and certification. Designed to enhance our comprehensive service capabilities, ensuring we can restore our customers' equipment to a like-new condition while maintaining maximum performance and reliability.



## Pump Testing



Assess the performance and efficiency of pumps used in various industries.

We use the test loop to demonstrate efficiencies of renewed or improved performance when overhauling or upgrading pumps to meet more challenging operating demands at site. Whether to increase pump performance or to reduce CO2 emissions and operating costs.

With over 100 years of experience as a pump manufacturer and service provider, we have the expertise to accurately perform the tests and provide practical information for pump optimisation and maintenance.

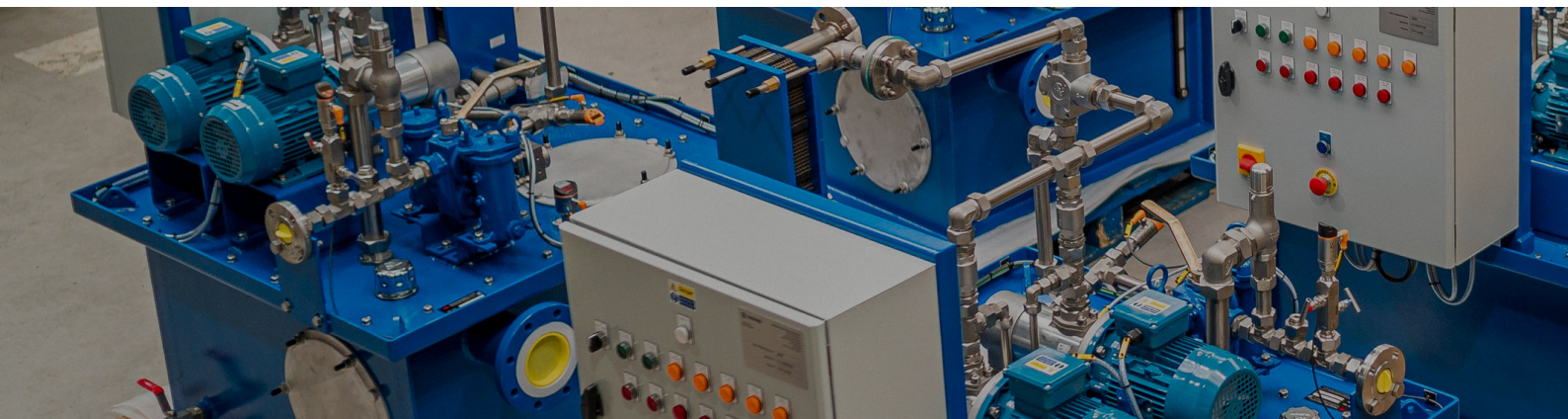


# Cooling Water Systems



We understand that effective cooling is essential for industrial equipment to operate efficiently.

Our Cooling Water Systems are designed to remove excess heat from vital components, including pump bearings, lube oil systems, chillers, electric motors, VSD transformers, and fan filter units. By ensuring optimal operating temperatures, our systems enhance performance and extend equipment lifespan.



# Fluid Power



Our engineering capabilities cover consulting, project management, design, manufacturing, and commissioning of complex hydraulic and control systems, including:

- Hydraulic Power Units (HPUs)
- Flushing & Testing Rigs
- Control Panels
- Lubrication Systems

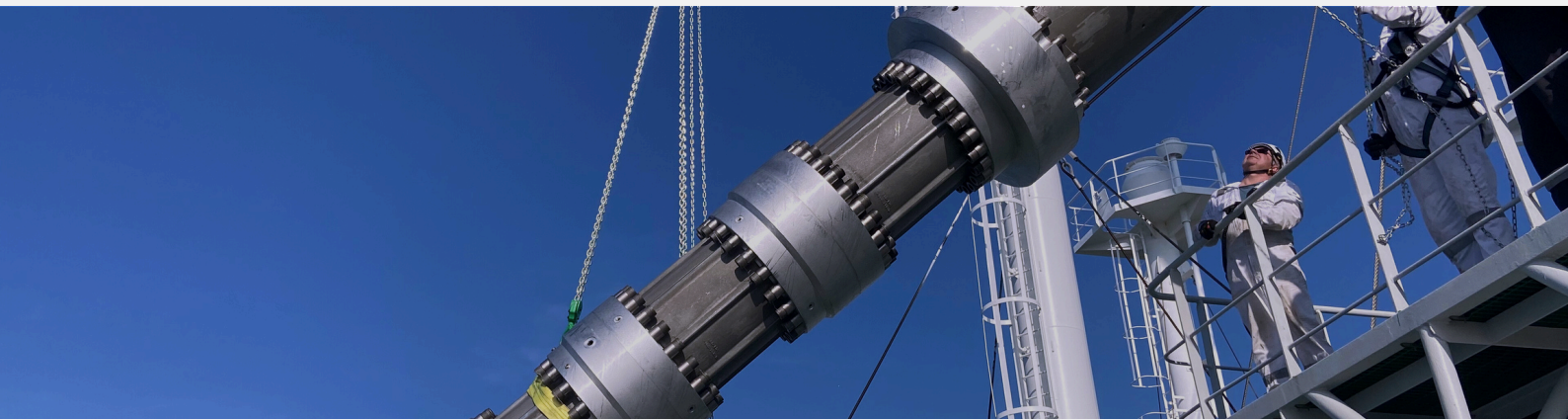
# Part of the Torishima Group

## Cryo Pump Repairs



CPR Ltd is a wholly owned subsidiary of Torishima with over 30 years' experience in the inspection, maintenance, installation and commissioning of submersed motor, cryogenic pumps, for the liquefied gas industry.

- **Workshop services: Grangemouth Facility**
- **Field Service**
- **Spare Parts**



## ICI Caldaie



ICI Caldaie are one of the largest manufacturers of boilers in Europe - their UK operation is part of the Torishima Group.

Their comprehensive range of commercial boiler products covers low temperature condensing boilers and low temperature high efficiency hot water boilers.





Committed to advancing industrial technology with innovative, efficient and reliable solutions.

---

Founded in 1919 in Osaka, Japan, Torishima is a specialist pump manufacturer and industrial service provider.

Our passion for the products and services we offer drives us to keep innovation at the heart of our business and to remain a leading company in the industry, evolving every day and aspiring to be indispensable to society.

---

[High Tech Pumps](#) ↗

---

[Service Solutions](#) ↗

---

[Sustainability](#) ↗

An aerial photograph of a river valley with green fields and a winding river, serving as a background for the bottom section of the page.

More than 100 years Driving  
Industrial Evolution



Innovative systems solutions coupled with expertise in pump technology.

Maximise efficiency, reduce maintenance costs and conserve energy in all applications through innovative products and solutions.

## Contact us - UK

### **Glasgow - European Head Offices and Workshop**

30 Colliery Road Clyde Gateway, Business Park London Road, Glasgow G32 8SL  
Tel: 01236 442390

### **Glasgow - Cooling Water Division - Offices and Workshop**

11 Russell Colt Street, Coatbridge, ML52BN  
Tel: 01236 442390

### **Royal Leamington Spa - Fluid Power Division - Offices and Workshop**

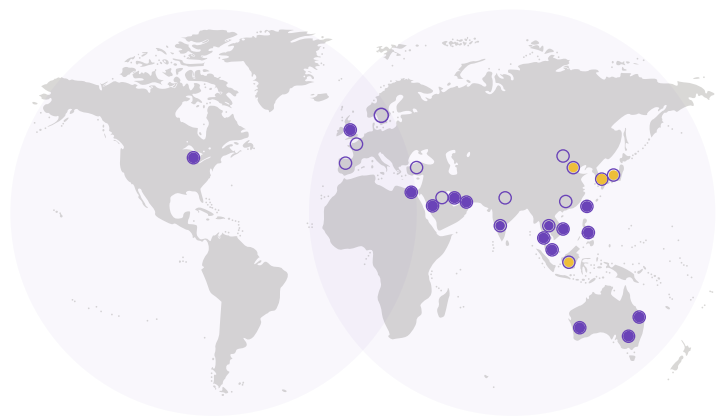
Unit 5 Berrington Road Sydenham Industrial Estate Royal Leamington Spa Warwickshire, CV31 1NB  
Tel: 01926 420847

### **Grangemouth - Cryo Pump Repairs - Offices and Workshop**

Unit 1 Barons Court Earls Gate Park, Roseland Hall, Grangemouth FK3 8BH.  
Tel: 01324 485 850

## Our Global Network

Offices in more than 25 countries  
17 service centres



[torishima.co.uk](http://torishima.co.uk)