

# Water Industry



Committed to advancing industrial technology with innovative, efficient and reliable solutions.

---

Founded in 1919 in Osaka, Japan, Torishima is a specialist pump manufacturer and industrial service provider.

Our passion for the products and services we offer drives us to keep innovation at the heart of our business, enabling us to remain a leading company in the industry as we continue to evolve and aspire to be indispensable to society.



# Torishima in the Water Industry

At Torishima we have always been aware of the importance of managing such a **precious resource as water**, and even more so today, as demand has grown exponentially in recent decades.

That is why from the very beginning, one of the pillars of our business has been to **provide reliable, high quality and efficient pumping equipment for the supply and efficient use of water and the correct management of wastewater.**

## Water Management Solutions:

### Water

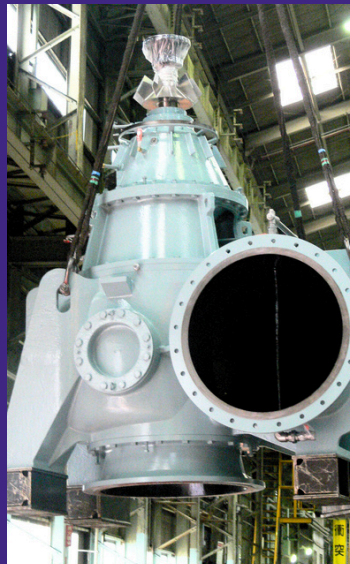
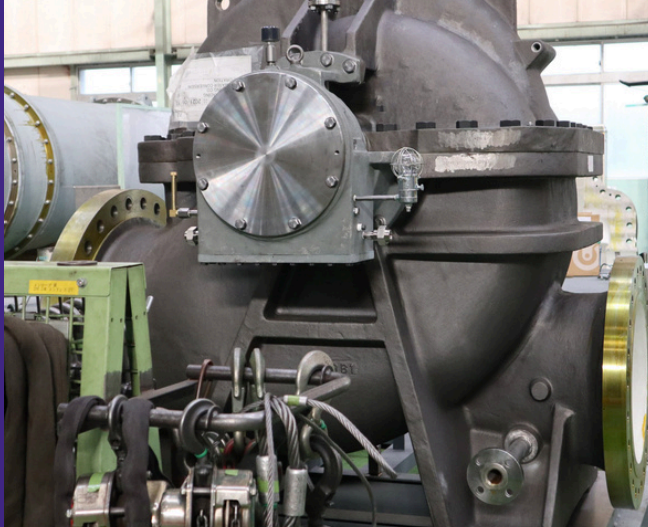
- Water extraction
- Drainage
- Water treatment
- Water transport and distribution
- Groundwater
- Agricultural irrigation
- Desalination

### Wastewater

- Wastewater treatment and reuse
- Sewage treatment
- Industrial wastewater
- Flood control
- Drainage



# Water and Wastewater Pumps



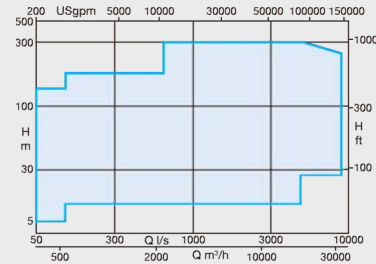
# CDM

## Axially split double-suction pump

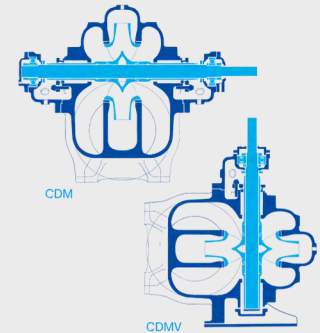
Engineered with a double-suction and three-dimensional impeller, this pump utilises the latest hydraulics to deliver superior performance. Available in both horizontal and vertical configurations, it offers the flexibility to suit a wide range of installations. Furthermore, the design allows for simple disassembly of the upper casing without disturbing the pipework, ensuring streamlined maintenance and easy inspections.

### Applications:

- Water intake / Distribution / Boosting / Circulation / Drainage
- Cooling water circulation for distinct heating and cooling
- Water intake / Distribution/ Water supply / Boosting for seawater desalination / waterworks/ sewage
- Irrigation for agriculture, Drainage, Pipe-line boosting



Capacity	180 to 33,000 m <sup>3</sup> /h
Total Head	3 to 300m
Temperature	up to 80°C
Size	200 to 1,400mm



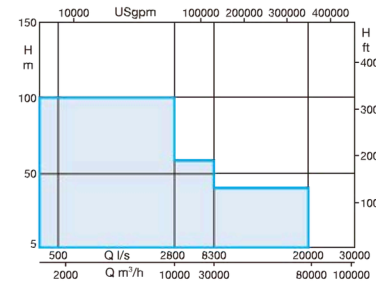
# CFV

## Vertical mixed-flow volute pump

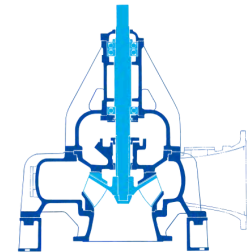
Applicable for wide range from low head to high head. Suitable for relay pumps in sewage treatment facilities.

### Applications:

- Potable and wastewater pumping
- Water intake
- Sewage transfer, Storm water drainage
- WRAS/DWI Compliance



Capacity	120 to 72,000 m <sup>3</sup> /h
Total Head	5 to 100m
Size	200 to 3,000mm



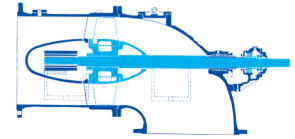
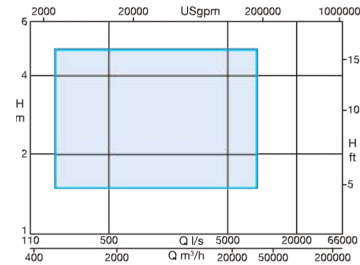
# IS

## Axial-flow propeller pump

Diffuser type, axial flow propeller suspended within wet pit. Offering various hydraulic models suitable for large capacity with low pump head of water. Axially split design offering easy maintenance without removing the lower casing.

### Applications:

- Water pumping / Drainage for agriculture
- Sewage transfer
- Rain water drainage
- Storm surge drainage



Capacity	660 to 36,000 m³/h
Total Head	1.5 to 5m
Size	400 to 2,000mm

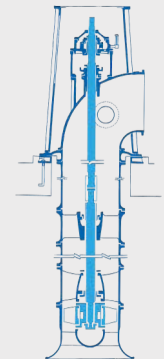
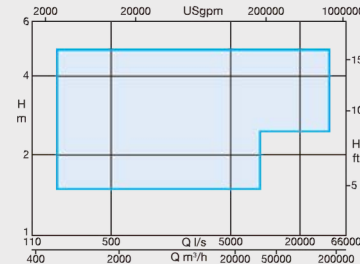
# ISV

## Vertical axial-flow propeller pump

Diffuser type, axial flow propeller suspended within wet pit. Especially used for large capacity with low head of water. The various hydraulic models applied to the change of the capacity and head.

### Applications:

- Water pumping / Drainage for agriculture
- River water drainage
- Cooling water in power plants



Capacity	600 to 186,000 m³/h
Total Head	1.5 to 5m
Size	400 to 4,600mm

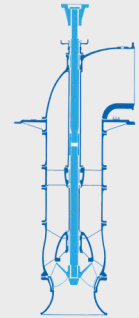
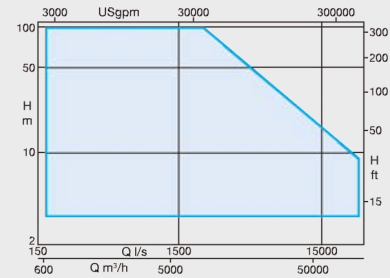
## SPV, SPTV (canister)

Vertically mixed-flow pump

Diffuser type, single or multistage design, mixed-flow impeller suspended within wet pit. Offering various hydraulic models, materials, and installation arrangement (above or below floor discharge) to suit plant specific design.

Applications:

- Rain water drainage
- Water intake for water works
- Sewage circulation
- Cooling water
- Water / Seawater intake
- Brine recirculation for seawater desalination



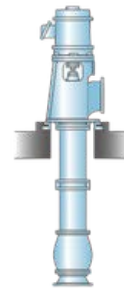
Capacity	600 to 80,000 m³/h
Total Head	up to 100m
Temperature	-10 to 80°C
Size	300 to 2,800 mm

## Types of Installation

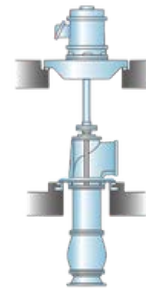
We offer four different installation types for our vertical pumps, designed to suit a range of operational requirements and site conditions. These include above floor installation, two-floor installation, pump motor unit configuration, and below floor installation.

Each option is engineered to optimise space utilisation, ease of maintenance, and overall system efficiency, ensuring reliable performance across a wide range of applications.

Above floor installation



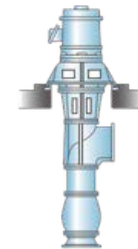
Two-floor installation

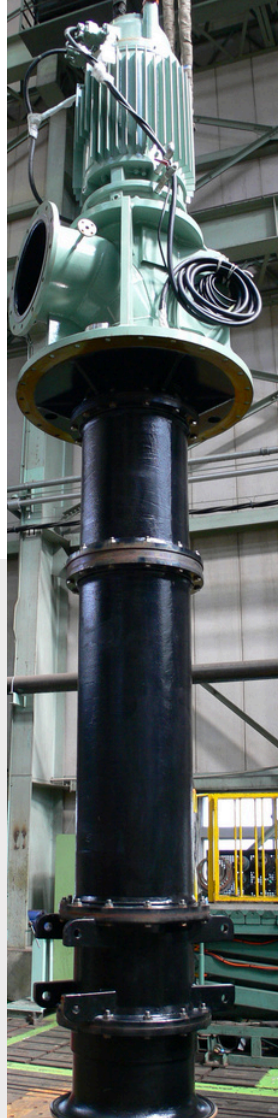


Pump motor unit



Below floor installation





# Water Industry-related Technological Solutions



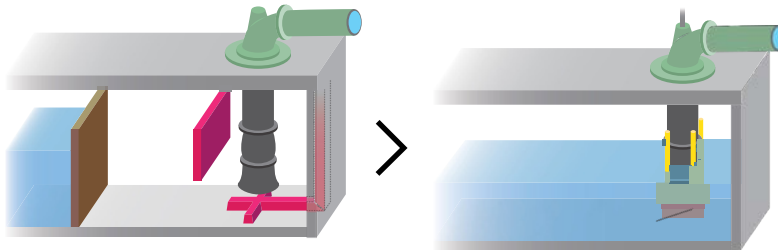
Over a century of  
engineering excellence  
driving tomorrow's  
water technology



# Pump Body with Vortex Prevention Technology

During torrential rain, drainage stations must handle massive inflows. Increasing pump capacity within existing sumps often creates damaging vortices.

Torishima's integrated technology suppresses these vortices more effectively than conventional baffles, delivering superior performance without the need for costly and time consuming civil engineering.



**Conventional measure to prevent vortices:** Costly civil engineering; restricted to high water levels.

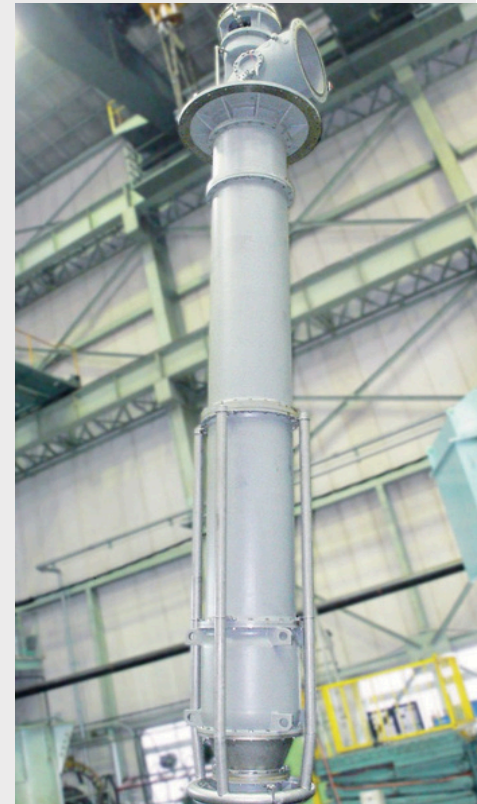
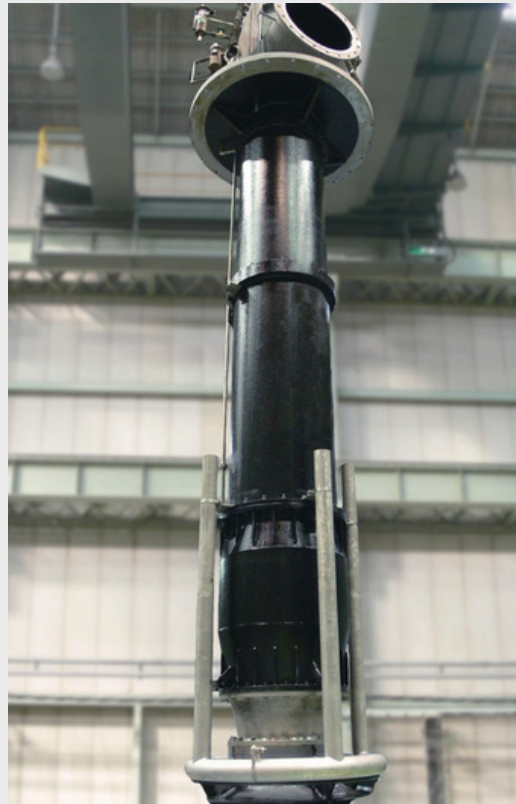
**Pump Integrated Control:** Lowers costs and ensures suction at lower water levels.



**Anti-Vortex Ring**

**Double Suction Bellmouth**

Integrated Protection:  
Eliminating vortices without  
the cost of civil works.

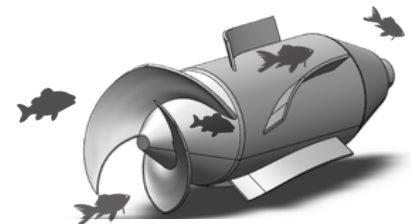
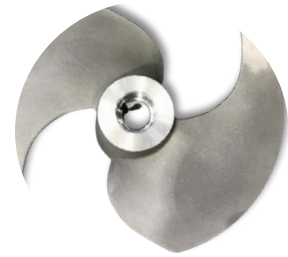


# Fish Friendly Pump

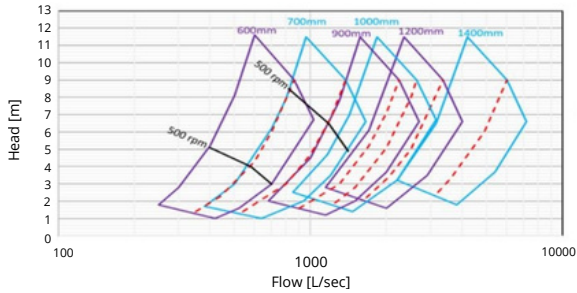
Protecting aquatic life is a cornerstone of responsible water management. At Torishima, we prioritise this through the development of environmentally conscious technology, specifically our fish-friendly pumps.

To ensure the safe passage of organisms through our systems, we have integrated several key design elements engineered to minimise physical harm. These innovations work in harmony to protect local ecosystems without compromising pumping efficiency.

- **Modified Impeller Design:** Impellers are rounded to minimise physical impact and stress on fish.
- **Enlarged Flow Passages:** Wider internal pathways within the pump provide sufficient space for fish to navigate without becoming trapped or injured.
- **Minimising Pressure Changes:** Designed to stabilise pressure changes within the pump, ensuring a smooth and safe passage for fish.



## Performance Range



Torishima's fish friendly pump design has been tested on 3 types of carefully selected live fish, with a 100% survival rate.

# Dewatering Solutions

Torishima Service Solutions offers a comprehensive range of diesel and electric-driven dewatering pumps engineered for demanding environments, combining high-efficiency performance with optional automatic self-priming systems.

Designed for reliability and ease of operation, our solutions feature smart control panels with auto start/stop and remote functionality, are available from stock for fast delivery, and can be supported through flexible annual maintenance agreements.



## Pumps Specification

- Acoustic enclosures for residential or noise-sensitive areas
- Mounting options: skid, trolley, trailer, and DNV lifting frames
- Non-clog impellers (standard on "S" range), handling solids up to 245mm
- Self-cleaning stuffing box protects mechanical seals from solids and sand
- Dry-run protection with separate oil reservoir for continuous operation
- Flow rates up to 15,000 m<sup>3</sup>/h and pressures up to 24 bar
- Durable construction: ductile iron standard, SS316 & CD4MCu optional



High-performance diesel and electric pumps with smart features and rapid support.



# Service Solutions

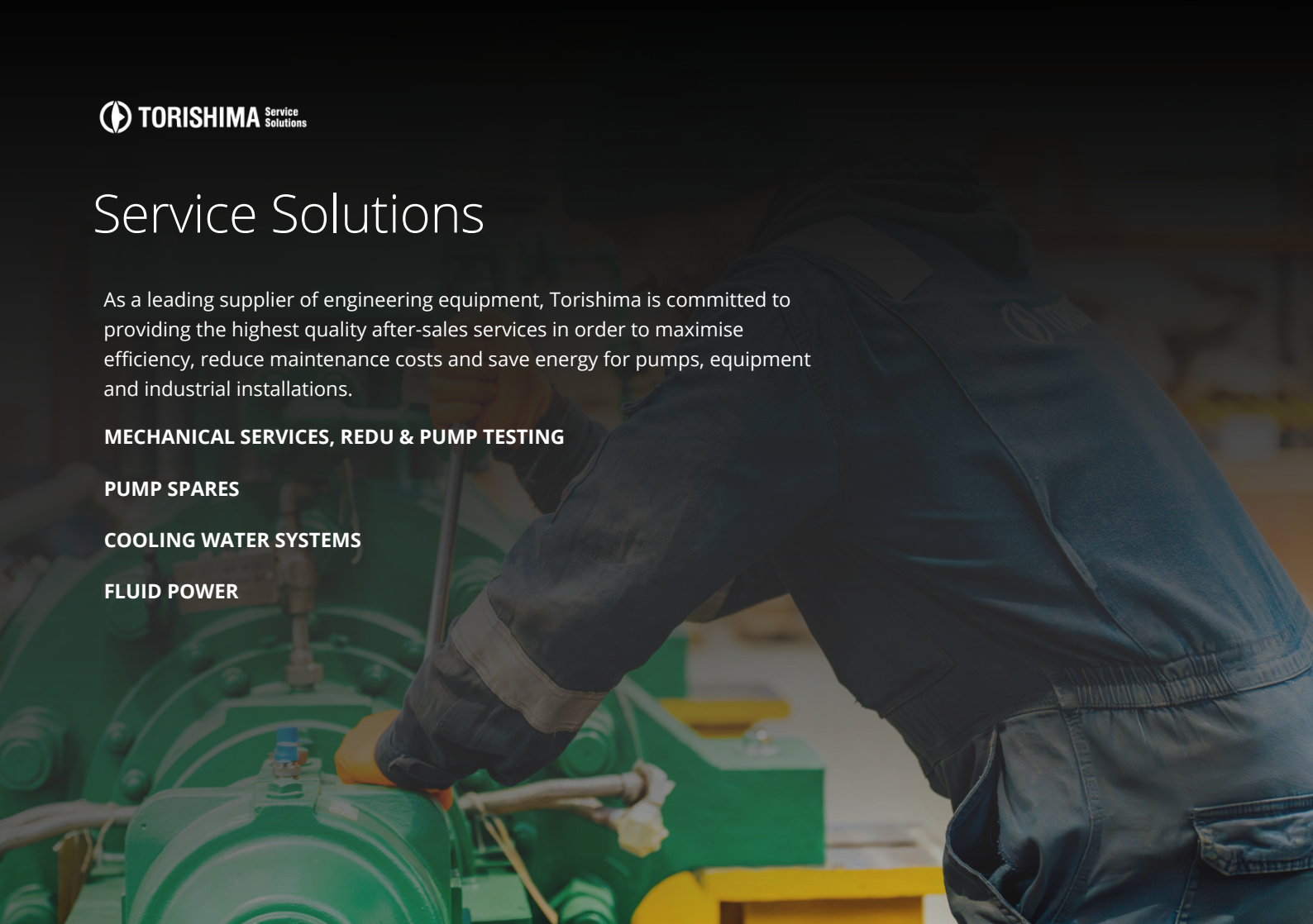
As a leading supplier of engineering equipment, Torishima is committed to providing the highest quality after-sales services in order to maximise efficiency, reduce maintenance costs and save energy for pumps, equipment and industrial installations.

**MECHANICAL SERVICES, REDU & PUMP TESTING**

**PUMP SPARES**

**COOLING WATER SYSTEMS**

**FLUID POWER**



# REDU<sup>®</sup>

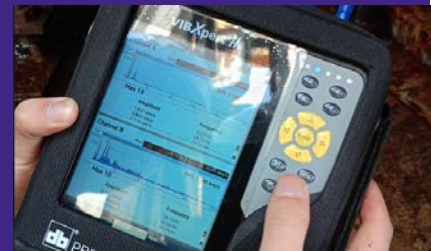
Re Engineering & Design Up

The REDU program brings factory-level engineering (CFD & FEA) to your existing infrastructure. We eliminate root-cause failures and adapt your machinery to new regulations and demand, maximising reliability while slashing your carbon footprint.

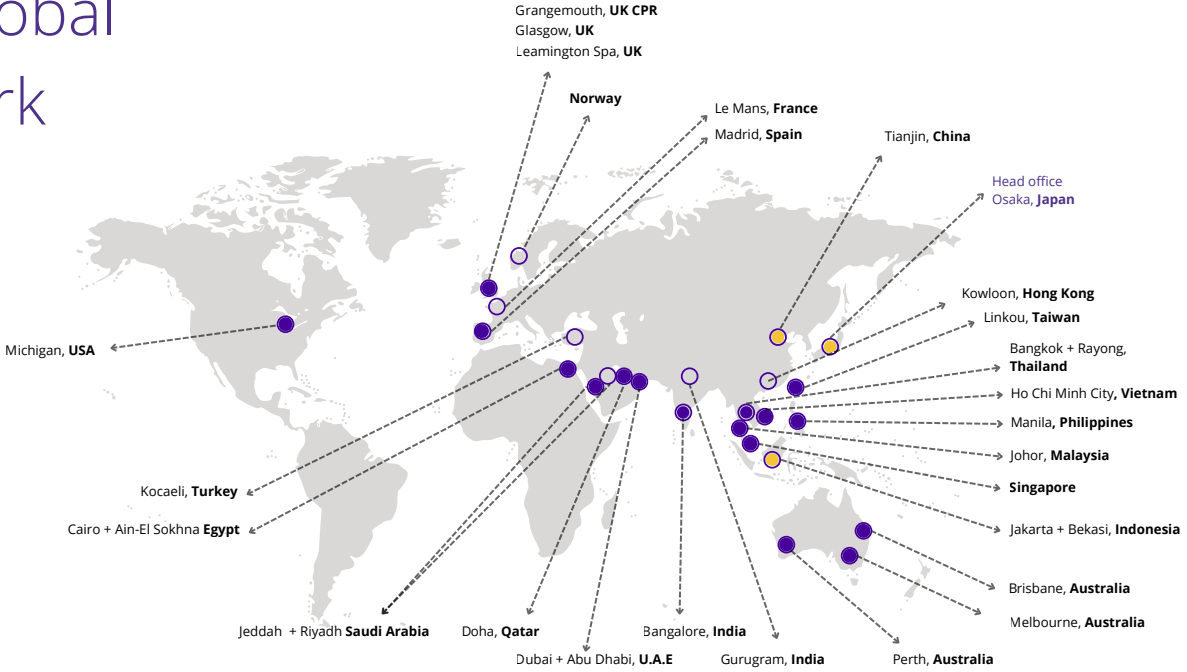
Achieve a sustainable, future-proof operation with total document control and zero need for new capital investment.



Scan here to see more of our REDU capabilities



# Our Global Network



○ Office

● Service centre

● Manufacturing

# Torishima in Europe

With over twenty years of established presence in Europe and our strategic base in Glasgow, we combine a century of global heritage with local technical expertise.

Our highly skilled team is dedicated to delivering specialised engineering solutions across the continent, fostering long-term partnerships built on reliability and innovation.

We are committed to driving the success of our business partners through exceptional service and a deep understanding of the European industrial landscape.



Part of the Group



Committed to pumps since 1919, we continue to evolve and make the world a better place.



Evolving to meet the demands of an ever-changing world.

## Contact Us - UK

### **Glasgow - European Head Office and Workshop**

30 Colliery Road, Clyde Gateway East, Glasgow, G32 8SL  
Tel: 01236 442390

### **Glasgow - Cooling Water Division - Office and Workshop**

11 Russell Colt Street, Coatbridge, ML52BN  
Tel: 01236 442390

### **Royal Leamington Spa - Fluid Power Division - Office and Workshop**

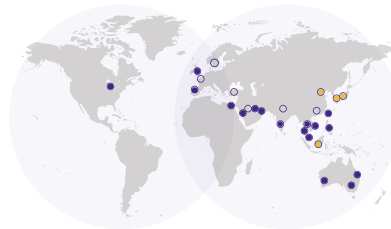
Unit 5 Berrington Road, Sydenham Industrial Estate, Leamington Spa, Warwickshire, CV31 1NB  
Tel: 01926 420847

### **Grangemouth - Cryo Pump Repairs - Office and Workshop**

Units 1&3 Barons Court, Earls Gate Business Park, Roseland Hall, Grangemouth FK3 8BH  
Tel: 01324 485 850

[torishima.co.uk](http://torishima.co.uk)

## Our Global Network



○ Office ● Service centre ● Manufacturing

